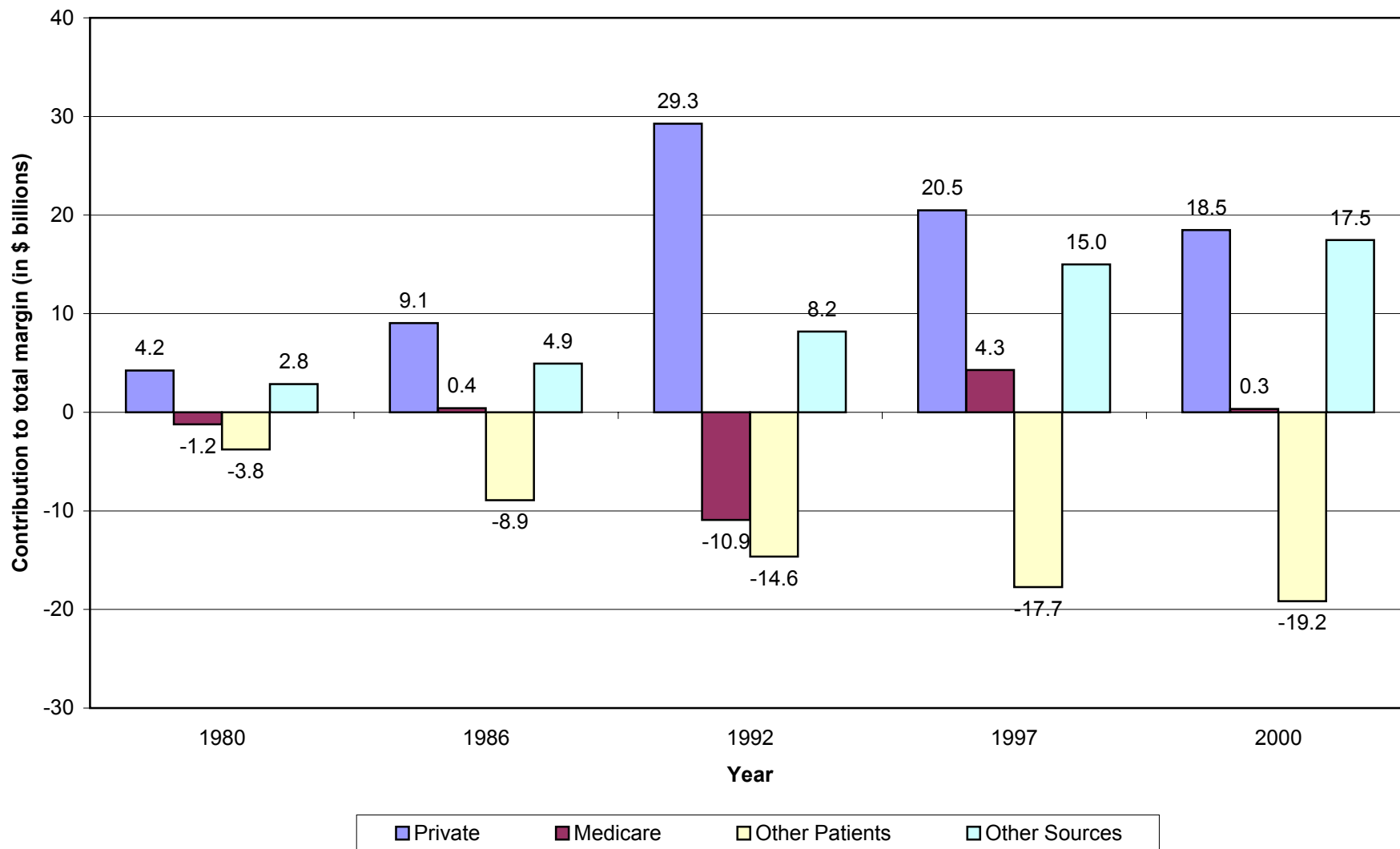


These materials were commissioned by the Robert Wood Johnson Foundation for use at the invitational meeting *When Public Payment Declines Does Cost-Shifting Occur? Hospital and Physician Responses* and to stimulate discussion and understanding of the hospital and physician responses to reductions in public payment. In the event that the Foundation and the authors intend to submit these commissioned materials or revisions thereto for publication, we request that the materials not be cited or circulated without the permission of AcademyHealth.

Contribution to Total Hospital Margin, By Revenue Category, Selected Years 1980-2000



NOTE: Contribution to total margin calculated from data on payment to cost ratios from American Hospital Association Annual Survey of Hospitals and Total expenses from American Hospital Association Hospital Statistics 2002.